

## Safeguarding Process (Adults)

**Adult Safeguarding Referral Agency Contacts**

**Locality Skilled Multi agency Response Team [SMART] Contacts**

**Crewe Contact:**  
01270 371 383 /4

**Wilmslow Contact:**  
01625 378 093 /4

**Congleton Contact:**  
01260 371 096 /017

**Macclesfield Contact:**  
01625 378 091 /092

---

**CHESHIRE POLICE PPU Adult @ Risk Officers**

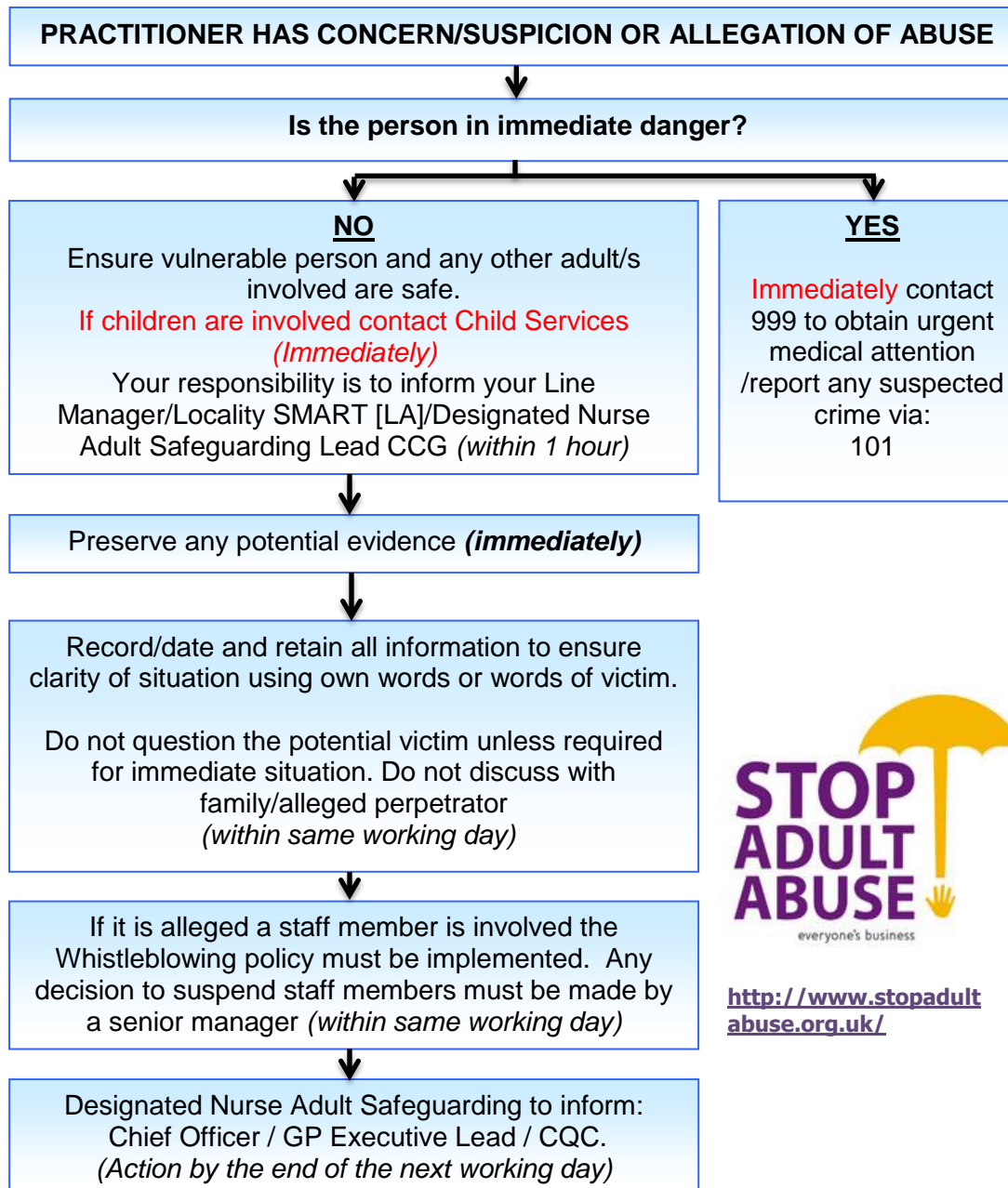
**Public Protection Unit**  
Katie Mow - 01606 363354  
Nicky Brown - 01606 365376

**Crewe:**  
Julie Rafferty/Robert Lees  
01606 364383

**Macclesfield:**  
John Howard/Maria Stride  
01606 364405

**Referral Unit:**  
01606 362524  
[Eastern.ppu@cheshire.pnn.police.uk](mailto:Eastern.ppu@cheshire.pnn.police.uk)

Concerns relating to Prevent, trafficking/Modern Slavery contact:  
101



**Contact Numbers in Health & Social Care**

**Designated Nurse Adult Safeguarding:**  
Lindsay Ratapana  
07917 506419

**MCA/DoLS Practitioner:**  
Jackie Goodall  
07774 331646

**National Domestic Abuse Helpline**  
24/7: 08082 000247

<http://www.cheshireeast.gov.uk>

**Mental Capacity Act [MCA] Information/Deprivation of Liberty Safeguards [DOL's] Information:**  
01606 271859

[Click here to download the adult safeguarding referral form.](#)

(See adults section, bullet point three).



<http://www.stopadultabuse.org.uk/>